



# Le Va Pasifika Suicide Prevention Community Fund Guidelines

The Le Va Pasifika Suicide Prevention Fund is aimed at preparing more Pasifika families and communities to respond effectively to prevent suicide within communities if and when a suicide occurs.

We invite online applications for funding for the amounts between \$50,000 and \$200,000 excluding GST.

Applications for the Fund are open from 31 January 2023 and will **close 24 February 2023, 4.30pm.**

## Why we fund

The key objectives of the Community Fund are to support Pasifika families and communities to develop solutions to prevent suicide through:

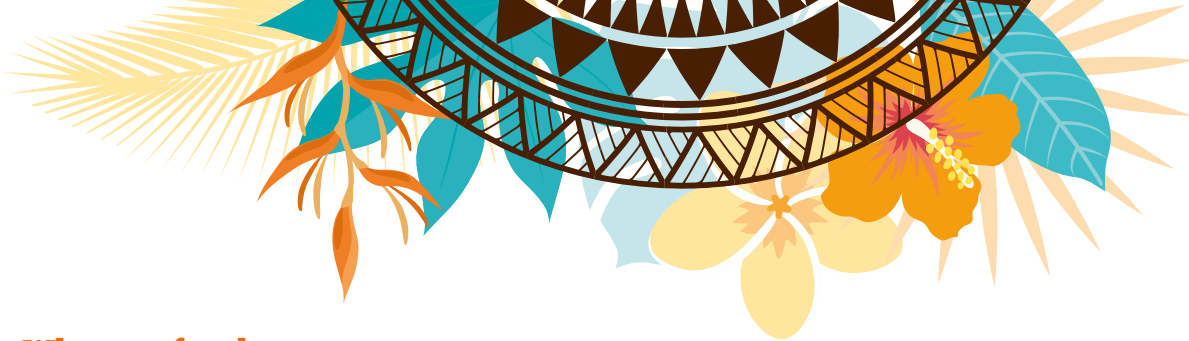
- Providing support to Pasifika families and communities that are experiencing suicide risk and/or are bereaved by suicide
- Prioritising population groups within our communities that are known to be at higher risk of suicidal distress
- Building inclusive communities and strengthening community resilience
- Encouraging a focus on mental health
- Raising awareness about available support services.

## Priority groups within Pasifika communities

We know that different people with different levels of advantage require different approaches and resources to achieve equitable health outcomes. Successful initiatives will foster one or more of the following priority groups within Pasifika communities (this does not imply that the applications should be limited to these groups):

- Men
- Youth
- Rainbow
- Rural communities
- People with lived experience of suicidal behaviour.





## What we fund

All funded initiatives must show a clear alignment to one, or more, of these outcomes:

- Families, whānau, and communities are strongly connected, and people are actively participating in the wider community to prevent or cope with distress
- Families, whānau and communities are actively building resilience and reducing the risks of suicide
- Community leaders empower people, foster resilience and bring people and resources together for better mental wellbeing
- Families, whānau and communities have stronger relationships and confidence to be able to talk about their difficulties
- People are informed about and assisted in accessing support services
- People bereaved by suicide receive the support they need within their families and whānau
- Pasifika young people are connected to their culture and are supported to build a strong cultural identity to enhance mental wellbeing.

## Evaluation Criteria

Our assessment panel will use Le Va's *Critical Elements for Implementing Pasifika Community-Based Suicide Prevention Initiatives* model to evaluate all funding applications.





## Who can apply?

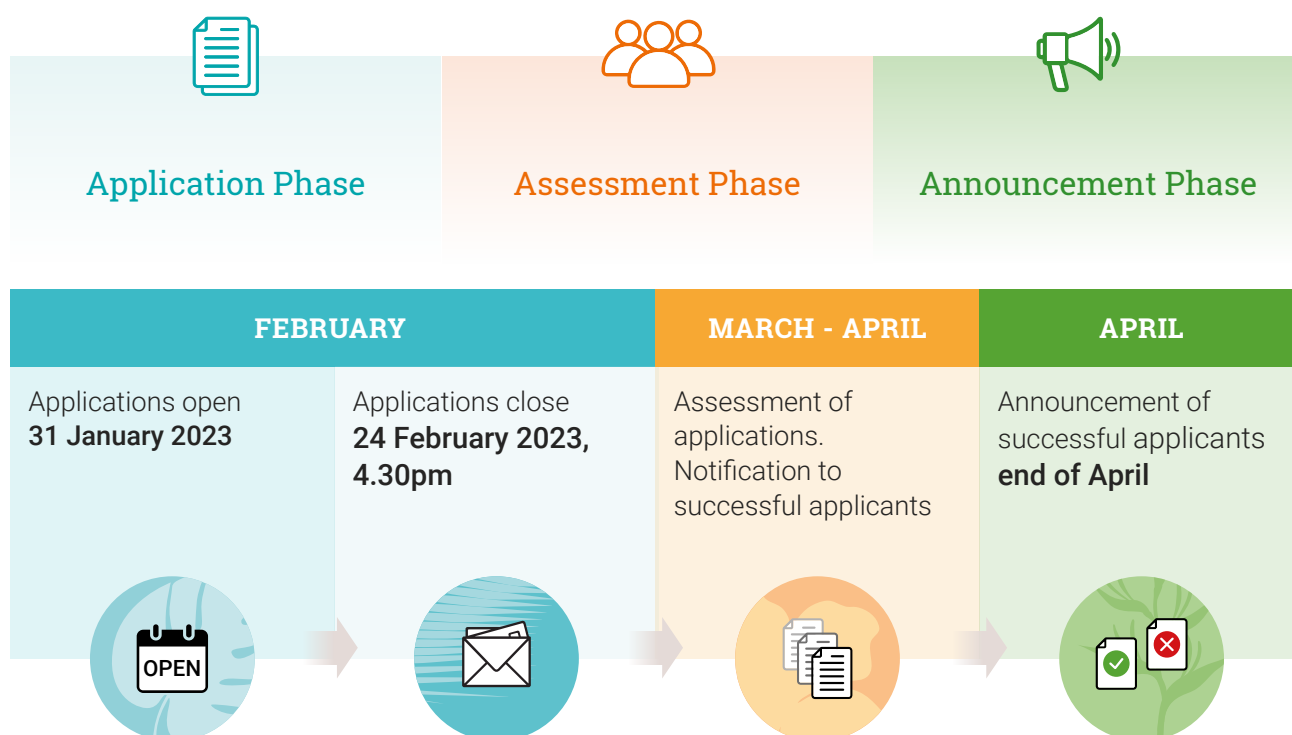
The applying organisation or initiative must

- be Pasifika-led
- address unmet needs of priority groups
- contribute to the objectives and outcomes of *Every Life Matters – He Tapu te Oranga o ia Tangata*
- aim to enhance protective factors for suicide prevention and postvention
- ensure collaboration and coordination
- be innovative with a new initiative that is currently not funded for
- be sustainable once the funding has stopped
- demonstrate access to the capacity, capability and systems required to manage and report.

## What is not funded:

- government statutory entities, overseas organisations and individuals or consultants will not be eligible to apply for the fund
- capital costs and major fixed assets (e.g. vehicles, buildings)
- ongoing operational costs of the applicant organisations not related to the initiative
- national or international conference attendance
- any activity that does not occur in New Zealand
- fundraising activities
- overseas travel and associated costs
- activities or projects that only benefit an individual
- projects that have already occurred, or costs that have already been incurred
- existing projects
- development of an individual or privately-owned business
- research
- one-off events.

## Fund Application Process



## Financial Requirements

Applications to the Community Fund will be for a minimum of \$50,000 and a maximum of \$200,000, excluding GST.

As part of your application, please complete the project budget in the application form. We do not fund projects where more than 50% of requested funds are allocated to staffing costs.

Please attach your most recent independently reviewed annual accounts, including the review report.

## Sending in your application

You can apply online at [www.leva.co.nz/suicide-prevention-fund/apply](http://www.leva.co.nz/suicide-prevention-fund/apply)

**Start Application**



## Application form content

### Section 1 – Key Contacts

1. Who is completing this application
2. Who will be the main person delivering this project and submitting project reports?
3. Who will be responsible for signing a contract with Le Va if this application is successful?

### Section 2 – Organisation Information

#### Section 3 – Referees

1. Please provide contact details of 2 referees who we may speak to about your application.

#### Section 4 – Project Details

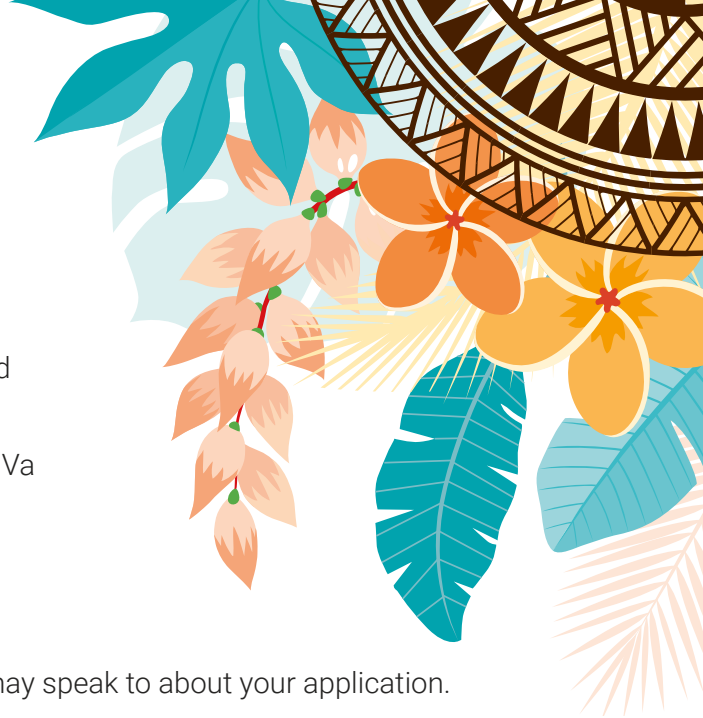
1. What programme outcome does this project contribute to?
2. Seven Critical Elements for Implementing Community-based Suicide Prevention Initiatives in Pasifika Communities
  - a. Targeted Approach is highly specific and tailored to deliver targeted support to meet the needs of the group.
  - b. Culturally Relevant initiatives are vital. This requires a level of cultural competence, including the ability to effectively engage with the target population and promote connection to cultural identity.
  - c. Family-Centred
  - d. Trusted Relationships are essential for any community-based engagement.
  - e. Clinically Safe and culturally safe messaging about suicide, as well as evidence-informed approaches to suicide prevention, is critical to implementing successful community-based suicide prevention initiatives.
  - f. Organisational Competence is about having access to organisational or administrative capacity and capability for: evaluation, measuring outcomes, reporting progress, quality assurance and financial management.
  - g. Sustainable initiatives generate culturally relevant resources, leadership or methods that have ongoing relevance and utility within communities.
3. Community Initiative Project Plan

#### Section 5 – Project Funding

1. Complete the proposed budget tables.

#### Section 6 – Confirmation and Declaration

1. Full Name
2. Position



## Section 7 – Supporting Documentation

1. Upload any additional documentation

## Section 8 – Checklist

1. I have read the Community Funding Guidelines
2. I have completed all parts of the application form
3. I have attached any supporting documentation requested in this application form e.g Project plan and budget
4. I have attached any additional information I believe supports this funding request
5. I have provided the contact details of 2 referees
6. I have signed the declaration form

## What happens if your application is successful?

We will contact you to let you know you are successful. We will also let you know if we need additional information.

**Applications close 4.30pm, Friday 24 February 2023**



LeVa



/LeVaPasifika

